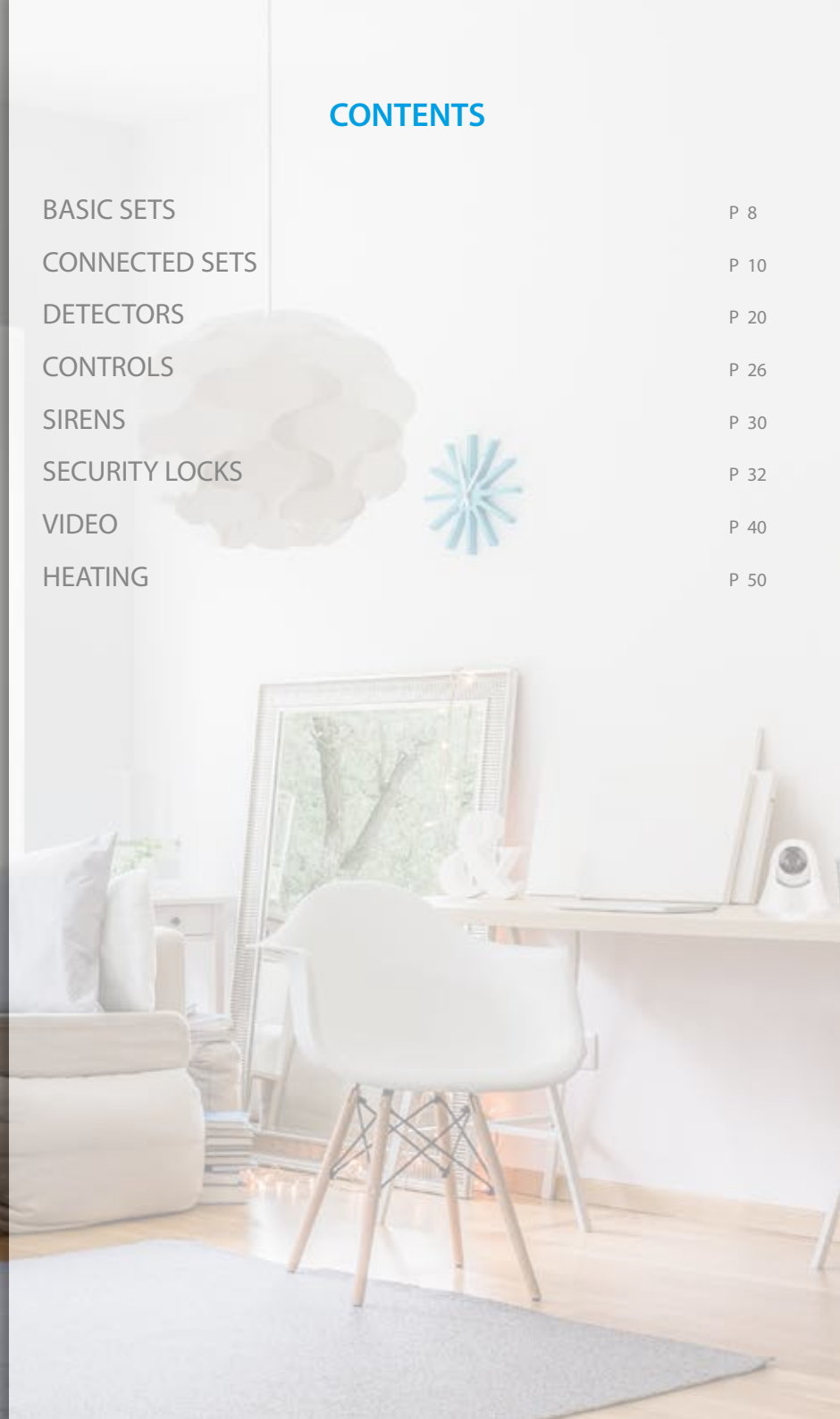


## CONTENTS

BASIC SETS	P 8
CONNECTED SETS	P 10
DETECTORS	P 20
CONTROLS	P 26
SIRENS	P 30
SECURITY LOCKS	P 32
VIDEO	P 40
HEATING	P 50









BASIC SETS



## GSM ALARM SET

### S3b SIM SECUAL



#### Features

GSM communication

Arm / disarm the system by SMS, phone call, or application (on iOS or Android)

Supports up to 10 remote controls, 50 wireless accessories and 50 RFID tags with secure connection

Can be disarmed / siren can be deactivated by RFID tag

Can store up to 5 phone numbers

SMS alerts

SKU : S3B-S

EAN code : 3700649102659



SET WITH CAMERA AVAILABLE

## GSM/PSTN ALARM SET

### S4 COMBO SECUAL



#### Features

GSM|PSTN communication

Arm / disarm the system by SMS, phone call, or application (on iOS or Android)

Supports up to 30 remote controls, 50 wireless accessories and 50 RFID tags with secure connection

Can be disarmed / siren can be deactivated by RFID tag

Can store up to 5 phone numbers & 2 CMS numbers

Digital screen

SKU : S4-C

EAN code : 3700930500133



SET WITH CAMERA AVAILABLE

## STARTER ALARM SET

### SC SIM SECUAL



#### Features

GSM communication

Arm / disarm the system by SMS, phone call, or application (on iOS or Android)

Supports up to 10 remote controls, 50 wireless accessories and 50 RFID tags with secure connection

Can be disarmed / siren can be deactivated by RFID tag

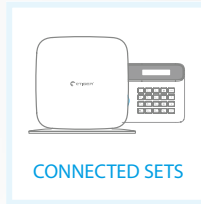
Can store up to 5 phone numbers

SMS alerts

SKU : SC-EU

EAN code : TBD







## ALARM SYSTEM WITH Wi-Fi AND GSM COMMUNICATION

### SECUAL box V2

Protect your home and your family when you're away. Control from distance with your smartphone (phonecall, SMS or application). Choose between SMS or Wi-Fi. Perfect for small homes or flats.



### Features

- Works with an Internet Connection (Wi-Fi Connection)
- Radio frequency: 433 MHz
- Control and setup of the system on your smartphone (Android or iOS app)
- Supports up to 10 remote controls, 100 wireless accessories with secure connection
- Notifications in case of alert, system status change and accessory low battery
- SIM card slot: stay connected even where you don't have an internet connection or when your home Wi-Fi network is down
- GSM communication [850 / 900 / 1800 / 1900MHz] suits all phones
- Audio surveillance of the site from distance
- Can store up to 5 phone numbers [notification by phonecall or SMS]
- Built-in 95 dB siren and backup batteries (lithium, 7.4V 500mAh, up to 8 hours in standby mode)
- AC Adaptor, input: AC 110-240V / 50-60 Hz AC Adaptor, output: DC 12V / 1A
- Wi-Fi 802.11b/g/n
- Panel dimensions: 150 x 160 x 49 mm | Weight: 330g

SKU : ESB-WS2A

EAN code : 3700930500331

Included accessories



x1

Pet immune motion detector



x1

Door/window contact



x2

Remote controls

### Box content

- Panel x1
- Pet immune motion detector x1
- Door Contact x1
- Remote Controls x2
- AC Adapter x1
- Documentation







## ALARM SYSTEM WITH Wi-Fi AND GSM COMMUNICATION

### S5-S

Protect your home and your family when you're away. Control from distance with your smartphone (phonecall, SMS or application). Choose between SMS or Wi-Fi. Perfect for homes and small business premisses.



### Features

- Works with an Internet Connection (Wi-Fi Connection)
- SIM card slot: stay connected even where you don't have an internet connection or when your home Wi-Fi network is down
- Radio frequency: 433 MHz
- Transmission distance: 80m (in open space)
- Arm / disarm the system by SMS, Wi-Fi/3G/4G, phone call, or application (on iOS or Android)
- Supports up to 10 remote controls, 50 wireless accessories and 50 RFID tags with secure connection
- Built-in siren (100dB) and call function from the panel
- Can be disarmed / siren can be deactivated by RFID tag
- Audio surveillance of the site from distance
- Can store up to 5 phone numbers [notification by WiFi/3G/4G phonecall or SMS]
- Entry and exit delay
- Alerts in case of power failure, power recovery, panel low battery and accessory low battery
- Wi-Fi 802.11b/g/n
- AC Adaptor, input: AC 110-240V / 50-60 Hz
- AC Adaptor, output: DC 12V / 800 mA
- Lithium battery: 3.7V / 800 mAh x 2 (Back-up 8h)
- Dimensions: 188 x 132 x 25 mm | weight: 320 g



x2

Motion Detectors



x2

Door/window contacts



x2

Remote controls



x2

RFID tags

### Box content

- Panel x1
- Motion Detectors x2
- Door Contacts x2
- Remote Controls x2
- RFID Tags x2
- AC Adapter x1
- Documentation





## ALARM SYSTEM WITH Wi-Fi/LANDLINE/GSM COMMUNICATION

### S6-C

Protect your home and your family when you're away. Control from distance with your smartphone (phonecall, SMS or application). Choose between SMS or Wi-Fi. Perfect for homes and small business premisses.



### Features

- Works with an Internet Connection (Wi-Fi Connection) [Optional RJ45 connection]
- GSM/PSTN Communication : stay connected even where you don't have an internet connection or when your home Wi-Fi network is down
- Radio frequency: 433 MHz
- Arm / disarm the system by SMS, Wi-Fi/3G/4G, phone call, or application (on iOS or Android)
- Supports up to 30 remote controls, 50 wireless accessories and 50 RFID tags with secure connection
- Can store up to 5 phone numbers [notification by WiFi/3G/4G phonecall or SMS] and 2 CMS numbers
- Built-in siren (100dB) and call function from the panel
- Can be disarmed / siren can be deactivated by RFID tag
- Audio surveillance of the site from distance
- Alerts in case of power failure, power recovery, panel low battery and accessory low battery
- LCD panel with control options
- Entry and exit delay
- Wi-Fi 802.11b/g/n
- AC Adaptor, input: AC 110-240V / 50-60 Hz
- AC Adaptor, output: DC 12V / 800 mA
- Lithium battery: 3.7V / 800 mAh x 2
- Panel size: 191 x 132 x 28 mm | Weight: 330 g



x2  
Motion Detectors



x2  
Door/window contacts



x2  
Remote controls



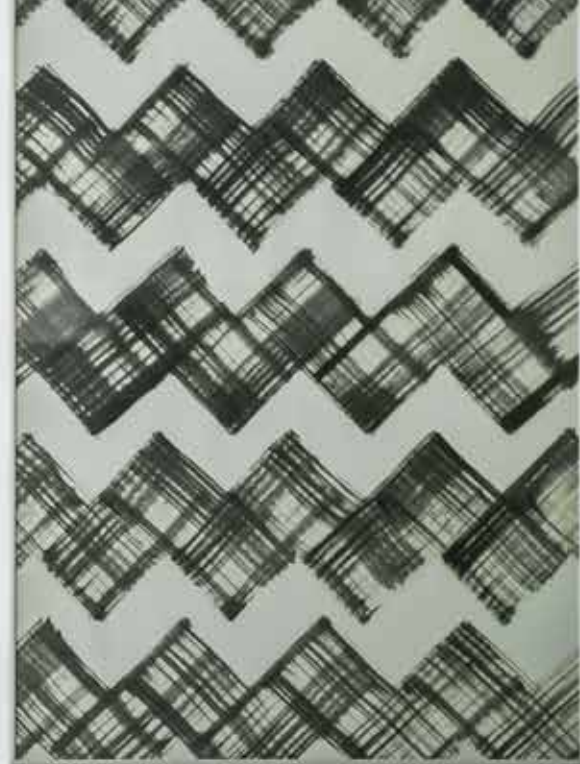
x2  
RFID tags

### Box content

- Panel x1
- Motion Detectors x2
- Door Contacts x2
- Remote Controls x2
- RFID Tags x2
- RJ11/RJ45 Connector
- AC Adapter x1
- Documentation









## Features

- Works with an Internet Connection (Wi-Fi Connection) [Optional RJ45 connection]
- GSM/PSTN Communication : stay connected even where you don't have an internet connection or when your home Wi-Fi network is down
- Radio frequency: 433 MHz
- Zigbee 3.0 : control your lights and appliances
- Arm / disarm the system by SMS, Wi-Fi/3G/4G, phone call, or application (on iOS or Android)
- Supports up to 30 remote controls, 50 wireless accessories and 50 RFID tags with secure connection
- Can store up to 5 phone numbers [notification by Wi-Fi/3G/4G phonecall or SMS] and 2 CMS numbers
- Built-in siren (100dB) and call function from the panel
- Can be disarmed / siren can be deactivated by RFID tag
- Audio surveillance of the site from distance
- Alerts in case of power failure, power recovery, panel low battery and accessory low battery
- LCD panel with control options
- Entry and exit delay
- Wi-Fi 802.11b/g/n
- AC Adaptor, input: AC 110-240V / 50-60 Hz
- AC Adaptor, output: DC 12V / 800 mA
- Lithium battery: 3.7V / 800 mAh x 2
- Dimensions: 140 x 140 x 38 mm | Weight: 320 g

## HOME ALARM SYSTEM WITH Wi-Fi/LANDLINE/GSM COMMUNICATION

### Secual Hub

Protect your home and your family when you're away. Control from distance with your smartphone (phonecall, SMS or application). Choose between SMS or Wi-Fi. Control other appliances and your lights with your alarm system. Perfect for homes and small business premisses.



x1

Motion Detector



x1

Door/window contact



x2

Remote controls

### Box content

- Hub x1
- Motion Detector x1
- Door Contact x1
- Remote Controls x2
- RJ11/RJ45 Connector
- AC Adapter x1
- Documentation



**Connect your home**  
With the SECUAL HUB



Wi-Fi



GSM &  
PSTN



Zigbee



Smart Home  
Ready



## MOTION DETECTOR

ES-D1A



### Features

- Internal antenna
- Frequency: 433 MHz
- Transmission distance: 80m (in open area)
- Power : 2 x AA 1.5V LR6 batteries (included)
- Detection scope: 8m/110°
- Low battery alert
- Mounting bracket included
- Dimensions: 118 x 52 x 35 mm

SKU : ES-D1A

EAN code : 3700649102000

## PET-IMMUNE MOTION DETECTOR

ES-D2A



### Features

- Compatible with pets ≤ 25kgs
- Internal antenna
- Frequency: 433 MHz
- Transmission distance: 80m (in open area)
- Power : 2 x AA 1.5V LR6 batteries (included)
- Detection scope: 8m/110°
- Low battery alert
- Mounting bracket included
- Dimensions: 118 x 52 x 35 mm

SKU : ES-D2A

EAN code : 3700649102017

## CURTAIN MOTION DETECTOR

ES-D8A



### Features

- Internal antenna
- Frequency: 433 MHz
- Transmission distance: 80m (in open area)
- Power : 2 x AAA 1.5V batteries (included)
- Enhanced battery life: Up to 36 months
- Detection range : 8 ~12m
- Detection angle : Horizontal : 15° | Vertical : 110°
- Self-checking function
- Low battery warning
- Dimensions : 105 x 40 x 28 mm

SKU : ES-D8A

EAN code : 3700930500355



## 360° MOTION DETECTOR

ES-CM1



### Features

Internal antenna  
Frequency: 433 MHz  
Transmission distance: 80m (in open area)  
Power : 2 x AA 1.5V LR6 batteries (included)  
Detection scope: 8m/360°  
Low battery alert  
Dimensions: Ø 112 x 35 mm

SKU : ES-CM1

EAN code : 3700649102000

## OUTDOOR MOTION DETECTOR

ES-D2AE



### Features

Pet immune detector (Up to 25kg)  
Internal antenna  
Frequency: 433 MHz  
Transmission distance: 80m (in open area)  
Power supply : ER14250 3V x2 (Included)  
Detection scope : 12m/110°  
Low battery alert  
Tamper protection  
IP65 waterproof  
dimensions: 148 x 72 x 52 mm

SKU : ES-D2AE

EAN code : 3700930500348

## SOLAR MOTION DETECTOR

ES-D2AS



### Features

Pet immune detector (Up to 25kg)  
Internal antenna  
Frequency: 433 MHz  
Transmission distance: 80m (in open area)  
Solar powered  
Detection scope : 12m/110°  
Low battery alert  
Tamper protection  
IP65 waterproof  
dimensions: 207 x 72 x 96 mm

SKU : ES-D2AS

EAN code : 3700930500287

## DOOR-/WINDOW SENSOR

ES-D3D



### Features

Internal Antenna  
Frequency : 433MHz  
Transmission distance : 80m (in open area)  
Battery : 1x CR2477 (Included)  
Tamper protection  
Low battery alert  
Transmitter dimensions : 55 x 30 x 15 mm  
Magnet dimensions: 25 x 10 x 7 mm

SKU : ES-D3D

EAN code : 3700930500393

## DOOR-/WINDOW SENSOR LONG RANGE

ES-D4A



### Features

Reed contact  
Frequency: 433 MHz  
Transmission distance: ≤ 300m (in open area)  
Power : 1 x A23 12V (included)  
Maximal magnet detection : 10mm  
Low battery alert  
Tamper protection  
Transmitter dimensions: 70 x 34 x 18 mm  
Magnet dimensions: 64 x 12 x 13 mm

SKU : ES-D4A

EAN code : 3700649102154

## GLASS VIBRATION SENSOR

ES-D9A



### Features

Internal Antenna  
Frequency: 433 MHz  
Transmission distance: 80m (in open area)  
Power : 1x CR2450 3V battery (included)  
Maximum detecting range: 9m  
Detection sensitivity : 10-50gr  
Low battery warning  
Dimensions : 59 x 38 x 17 mm  
Weight: 100g

SKU : ES-D9A

EAN code : 3700930500324

## SMOKE DETECTOR

ES-D5B



### Features

- Can be used standalone
- Frequency: 433 MHz
- Transmission distance:  $\geq 100$  m (in open area)
- Power 2 x AA 1.5V battery (included)
- Battery life:  $\geq 1$  year
- Smoke sensitivity: 0.09 ~ 0.16 dB/m
- Heat sensitivity: 54 ~ 70°C
- Volume: >85dB (at 3 m)
- Certification: EN 14604:2005/AC:2008
- Dimensions:  $\varnothing 120 \times 35.5$  mm

SKU : ES-D5B

EAN code : 3700930500089

## GAS/LPG DETECTOR

ES-D6A



### Features

- Can be used standalone
- Frequency : 433MHz
- Transmission distance: 80m (in open area)
- Power supply: AC 220V
- Detects natural gas / LPG
- Highly reliable sensor with MCU processor
- Autoreset and autocheck function
- Alarm level 6% LEL of natural gas
- Error +/-3% LEL of natural gas
- Dimensions: 110 x 70 x 40 mm

SKU : ES-D6A

EAN code : 3700930500317

## WATER LEAK DETECTOR

ES-D7A



### Features

- Internal antenna
- Frequency: 433 MHz
- Transmission distance: 80m (in open area)
- Power : 1x CR2450 3V battery (included)
- Rust-proof metal probe to ensure longer service life
- LED light in case of alarm
- Low battery warning
- Transmitter dimensions : 59 x 38 x 17 mm
- Dimensions sensor : 35 x 24 x 8 mm
- Cable : 150cm

SKU : ES-D7A

EAN code : 3700930500300



## SIGNAL REPEATER

### ES-SR1

Battery operated, USB charged, signal repeater. Compatible with all SECUAL alarms.

#### Features

- Integrated antenna
- Frequency: 433 MHz
- Transmission distance: 80m (in open space)
- Can be plugged into a wall socket
- Can be charged via USB and placed out of sight
- USB adaptor 220 V / CA
- Internal battery: 3.7 V 300 mAh
- Increase the transmission area of your alarm system
- To be installed between the control panel and accessories located too far from the control panel
- Low battery alert
- Dimensions: 131 x 35 x 15 mm

#### Box Content

- signal repeater x1
- USB adaptor 220V x1
- User manual

#### SKU

ES-SR1

#### EAN

3700930500263



CONTROLS

## RFID BADGE

ES-T1A



### Features

Magnetic tag  
Dimensions: 45 x 30 x 7 mm

SKU : ES-T1A

EAN code : 3700649102055

## SOS BADGE

ES-PB1



### Features

Frequency: 433 MHz  
Transmission distance: 80m (in open space)  
Battery : CR2025 3V x1 (included)  
SOS function  
Dimensions: 63 x 34 x 7 mm

SKU : ES-PB1

EAN code : 3700930500270

## REMOTE CONTROL

ES-RC1



### Features

Internal Antenna  
Frequency: 433 MHz  
Transmission distance: 80m (in open area)  
Powered by one CR2025 Lithium battery (included)  
Large keys  
Dimensions: 63 x 34 x 11 mm

SKU : ES-RC1

EAN code : 3700649102048





## WIRELESS KEYPAD

### ES-K1A

Battery operated keypad with RFID reader. Compatible with all SECUAL alarms.

### Features

- Integrated antenna
- Frequency: 433 MHz
- Transmission distance: 80m (in open space)
- Deactivation protected by passcode
- Built-in RFID reader
- Powered by 3 x AAA batteries (included)
- Low battery alert
- Dimensions: 135 x 90 x 15 mm

### Box Content

- Keypad x1
- Screws and plugs
- Documentation

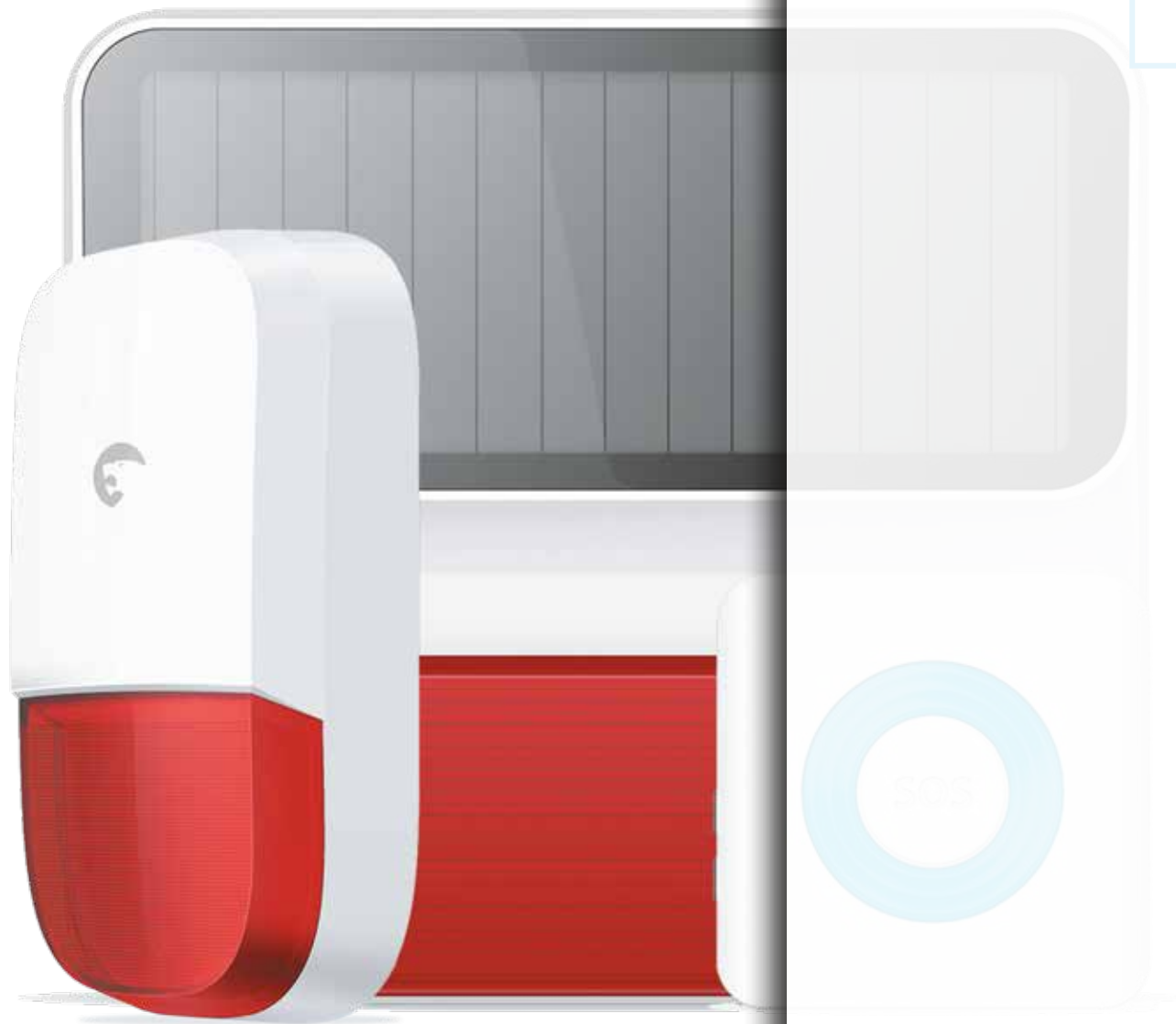
### SKU

ES-SK1A

### EAN

3700649102079





SIRENS

## INDOOR SIREN

ES-S6A



### Features

Can be used as:

- 1) An additional siren, connected to an existing alarm system (eTIGER SECUAL alarms)
- 2) A standalone alarm system (supports up to 20 accessories)  
Transmission distance: up to 80 m (in open space)  
Volume: 85 dB (at 1m, with fully charged battery)  
Strobe light  
Built-in AC adapter  
Backup battery: 3.7V / 600mA Lithium (included)  
Dimensions (including plug): 81 x 80 x 78 mm  
Dimensions (excluding plug): 81 x 80 x 38 mm

SKU : ES-S6A

EAN code : 3700930500393

## OUTDOOR SIREN

ES-S7B



### Features

Can be used as:

- 1) An additional siren, connected to an existing alarm system (eTIGER SECUAL alarms)
- 2) A standalone alarm system (supports up to 20 accessories)  
Transmission distance: up to 80 m (in open space)  
Volume: 100 dB (at 1m, with fully charged battery)  
Strobe light  
Power supply:  
. Input: AC 110V~ 220V / 50-60Hz  
. Output: DC 12V / 1A  
Backup battery: Lithium, 7.4V / 800mA  
Dimensions: 149 x 78 x 42 mm | Weight : 175 g

SKU : ES-S7B

EAN code : 3700930500393

## OUTDOOR SOLAR SIREN

ES-S8A



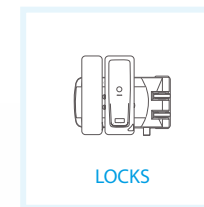
### Features

Can be used as:

- 1) An additional siren, connected to an existing alarm system (eTIGER SECUAL alarms)
- 2) A standalone alarm system (supports up to 20 accessories)  
Transmission distance: up to 80 m (in open space)  
Volume: 100 dB (at 1m, with fully charged battery)  
Strobe light  
Power supply: 1 solar panel (154.5 x 69.5 x 3.2 mm), 5V / 60mA  
Backup battery: 18650 3.7V 2200 mAh  
Battery charging time: around 44h (depending on insolation)  
Dimensions: 162 x 182 x 65 mm | Weight : 650 g

SKU : ES-S8A

EAN code : 3700930500393





## WIRELESS DEADBOLT SET WITH INDOOR KEYPAD

### ES-DL01

The eTiger deadbolt features an interlocking bolt that prevents it from being pried, lifted, or removed from the locking plate that is attached to the door jam. This helps to ensure your door cannot be moved in any way to bypass the lock. It has a convenient Open/close button on the lock itself. There is no bolt within the door itself and no need for a hole in the door jamb, so it can be used in situations where the door or jam is too thin to support a typical deadbolt. This deadbolt is fully wireless and is compatible with the majority of wireless eTiger home security systems (Secual Sets S5 and S6/Secual Box 3/Secual Hub). Due to the fact that the wireless lock is mounted on the inside of the door or window, it is invisible from the outside and completely tamperproof.

This set includes:

One wireless stainless steel deadbolt lock , one wireless RFID keypad, one remote control, one RFID tag.

As is the case for all eTiger products, the wireless configuration guarantees a quick and easy install process, which does not require any damaging of or drilling into the door of window. The 433Mhz rolling code with encryption algorithm ensures an optimal level of security at all times.

The keypad can store up to 500 pin codes or RFID tags and battery life of all components is 1 year based on 10 activations per day.

### Features

- Can be used as a standalone lock set
- Wireless frequency : 433MHz
- Transmission distance : 50m (in open area)
- Power supply:
  - Power supply main block : 2x AA 1.5 V (included)
  - Power supply remote control : 1x CR2032 3V (incl.)
  - Power supply Keypad : 1x CR2477 3V (included)
- Multi access control : Use both RFID and keypad to unlock
- Low battery notification (When connected to SECUAL alarms)
- Control by APP (When connected to SECUAL alarms)
- Up to 500 users with secure connection
- Installation in a few minutes
- Water resistant keypad with RFID function
- Automatic unlock when battery is empty
- Compatible with Following SECUAL alarm systems :
  - S5/S6/Secual Hub/Secual Box 3
- Dimensions :
  - Main block : 150 x 95 x 39 mm
  - Keypad : 115 x 78 x 23 mm

### Box Content

- Main metal lock x1
- RFID keypad x1
- Remote control x1
- RFID tag x1
- Screws, plugs and adhesive tape
- Documentation

### SKU

ES-DL01

### EAN code

3700930500614





## WIRELESS DEADBOLT SET WITH INDOOR BIOMETRIC FINGERPRINT KEYPAD

### ES-DL02

The eTiger deadbolt features an interlocking bolt that prevents it from being pried, lifted, or removed from the locking plate that is attached to the door jam. This helps to ensure your door cannot be moved in any way to bypass the lock. It has a convenient Open/close button on the lock itself. There is no bolt within the door itself and no need for a hole in the door jamb, so it can be used in situations where the door or jamb is too thin to support a typical deadbolt. This deadbolt is fully wireless and is compatible with the majority of wireless eTiger home security systems (Secual Sets S5 and S6/Secual Box 3/Secual Hub). Due to the fact that the wireless lock is mounted on the inside of the door or window, it is invisible from the outside and completely tamperproof.

This set includes:

One wireless stainless steel deadbolt lock, one wireless RFID keypad with fingerprint scan, one remote control, one RFID tag.

As is the case for all eTiger products, the wireless configuration guarantees a quick and easy install process, which does not require any damaging of or drilling into the door of window. The 433Mhz rolling code with encryption algorithm ensures an optimal level of security at all times.

The keypad can store up to 500 pin codes or RFID tags and battery life of all components is 1 year based on 10 activations per day.

### Features

- Can be used as a standalone lock set
- Wireless frequency : 433MHz
- Transmission distance : 50m (in open area)
- Power supply:
  - Power supply main block : 2x AA 1.5 V (included)
  - Power supply remote control : 1x CR2032 3V (incl.)
  - Power supply Keypad : 3x AAA 1.5V (included)
- Multi access control : Use both RFID and keypad to unlock
- Low battery notification (When connected to SECUAL alarms)
- Control by APP (When connected to SECUAL alarms)
- Up to 500 users with secure connection
- Installation in a few minutes
- Water resistant keypad with RFID function
- Automatic unlock when battery is empty
- Compatible with Following SECUAL alarm systems :
  - S5/S6/Secual Hub/Secual Box 3
- Dimensions :
  - Main block : 150 x 95 x 39 mm
  - Keypad : 115 x 112 x 35 mm

### Box Content

- Main metal lock x1
- RFID keypad x1
- Remote control x1
- RFID tag x1
- Screws, plugs and adhesive tape
- Documentation

### SKU

ES-DL02

### EAN code

3700930500621



## WIRELESS DEADBOLT SET WITH OUTDOOR KEYPAD

### ES-DL03

The eTiger deadbolt features an interlocking bolt that prevents it from being pried, lifted, or removed from the locking plate that is attached to the door jam. This helps to ensure your door cannot be moved in any way to bypass the lock. It has a convenient Open/close button on the lock itself. There is no bolt within the door itself and no need for a hole in the door jamb, so it can be used in situations where the door or jamb is too thin to support a typical deadbolt. This deadbolt is fully wireless and is compatible with the majority of wireless eTiger home security systems (Secual Sets S5 and S6/Secual Box 3/Secual Hub). Due to the fact that the wireless lock is mounted on the inside of the door or window, it is invisible from the outside and completely tamperproof.

This set includes:

One wireless stainless steel deadbolt lock , one wireless outdoor RFID keypad, one remote control, one RFID tag.

As is the case for all eTiger products, the wireless configuration guarantees a quick and easy install process, which does not require any damaging of or drilling into the door of window. The 433Mhz rolling code with encryption algorithm ensures an optimal level of security at all times.

The weatherproof keypad can store up to 500 pin codes or RFID tags and battery life of all components is 1 year based on 10 activations per day.

### Features

- Can be used as a standalone lock set
- Wireless frequency : 433MHz
- Transmission distance : 50m (in open area)
- Power supply:
  - Power supply main block : 2x AA 1.5 V (included)
  - Power supply remote control : 1x CR2032 3V (incl.)
  - Power supply Keypad : 1x CR2477 3V (included)
- Multi access control : Use both RFID and keypad to unlock
- Low battery notification (When connected to SECUAL alarms)
- Control by APP (When connected to SECUAL alarms)
- Up to 500 users with secure connection
- Installation in a few minutes
- Water resistant keypad with RFID function
- Automatic unlock when battery is empty
- Compatible with Following SECUAL alarm systems :
  - S5/S6/Secual Hub/Secual Box 3
- Dimensions :
  - Main block : 150 x 95 x 39 mm
  - Keypad : 130 x 92 x 83 mm

### Box Content

- Main metal lock x1
- RFID keypad x1
- Remote control x1
- RFID tag x1
- Screws, plugs and adhesive tape
- Documentation

### SKU

ES-DL03

### EAN code

3700930500799

## REMOTE FOR SECURITY LOCK RANGE

### ES-RC03

Remote Control connected by radio-frequency and compatible with SECUAL D1/D2/D3 lock range. Battery operated.



#### Features

- Internal antenna
- Frequency: 433 MHz
- Transmission distance: 80m (in open area)
- Large keys
- Powered by one CR2032 Lithium battery (included)
- Dimensions: 63 x 34 x 11 mm

SKU : ES-RC03

EAN code : 3700930500706

## RFID BADGE FOR SECURITY LOCK KEYPADS

### ES-T2A

RFID badge compatible with SECUAL D1/D2/D3 lock range keypads.



#### Features

Dimensions: 45 x 30 x 7 mm

SKU : ES-T2A

EAN code : 3700649102055



## WIRELESS DEADBOLT LOCK

### ES-DLS-01

The eTIGER deadbolt features an interlocking bolt that prevents it from being pried, lifted, or removed from the locking plate that is attached to the door jam. This helps to ensure your door cannot be moved in any way to bypass the lock. It has a convenient Open/close button on the lock itself. There is no bolt within the door itself and no need for a hole in the door jamb, so it can be used in situations where the door or jam is too thin to support a typical deadbolt. This deadbolt is fully wireless and is compatible with the majority of wireless eTiger home security systems (Secual Sets S5 and S6/Secual Box 3/Secual Hub). Due to the fact that the wireless lock is mounted on the inside of the door or window, it is invisible from the outside and completely tamperproof.

This set includes: One wireless stainless steel lock, Two remote controls

As is the case for all eTiger products, the wireless configuration guarantees a quick and easy install process, which does not require any damaging of or drilling into the door or window. The 433Mhz rolling code with encryption algorithm ensures an optimal level of security at all times.

### Feature

- Can be used as a standalone Lock set
- Wireless frequency : 433MHz
- Transmission distance : 50m (in open area)
- Power supply:
  - Power supply main block : 2x AA 1.5 V (included)
  - Power supply remote control : 1x CR2032 3V (incl.)
- Low battery notification (When connected to Secual Alarm)
- Lock or unlock by APP (When connected to Secual Alarm)
- Installation in a few minutes
- Automatic unlock when battery is empty
- Compatible with Following SECUAL alarm systems : S5/S6/Secual Hub/Secual Box 3
- Dimensions Main block : 150 x 95 x 39 mm | Weight : 800 g

### Box content

- Main block x1
- Remote controls x2
- Screws, plugs and adhesive tape
- Documentation

### SKU

ES-DLS-01

### EAN code

3700930500645



## WIRELESS DEADBOLT LOCK

### ES-DLS-02

The eTIGER deadbolt features an interlocking bolt that prevents it from being pried, lifted, or removed from the locking plate that is attached to the door jam. This helps to ensure your door cannot be moved in any way to bypass the lock. There is no bolt within the door itself and no need for a hole in the door jamb. This deadbolt is fully wireless and is compatible with the majority of wireless eTiger home security systems (Secual Sets S5 and S6/Secual Box 3/Secual Hub). Due to the fact that the wireless lock is mounted on the inside of the door or window, it is invisible from the outside and completely tamperproof.

This set includes: One wireless stainless steel lock, Two remote controls

As is the case for all eTiger products, the wireless configuration guarantees a quick and easy install process, which does not require any damaging of or drilling into the door or window. The 433Mhz rolling code with encryption algorithm ensures an optimal level of security at all times.

### Feature

- Can be used as a standalone Lock set
- Wireless frequency : 433MHz
- Transmission distance : 50m (in open area)
- Power supply:
  - Power supply main block : 2x AA 1.5 V (included)
  - Power supply remote control : 1x CR2032 3V (incl.)
- Low battery notification (When connected to Secual Alarm)
- Lock or unlock by APP (When connected to Secual Alarm)
- Installation in a few minutes
- Automatic unlock when battery is empty
- Compatible with Following SECUAL alarm systems : S5/S6/Secual Hub/Secual Box 3
- Dimensions Main block : 180 x 122 x 26 mm | Weight: 800 g

### Box content

- Main block x1
- Remote controls x2
- Screws, plugs and adhesive tape
- Documentation

### SKU

ES-DLS-02

### EAN code

3700930500683

## RFID KEYPAD

### ES-D3D

Use RFID to unlock.



#### Features

- Wireless frequency : Encoded 433MHz
- Transmission distance : 20m (in open area)
- Power supply Keypad : 1x CR2477 3V (included)
- Low battery notification
- Up to 60 users with secure connection
- Installation in a few minutes
- Keypad with RFID function
- Low power consumption : >1Year
- Compatible with Following SECUAL alarm systems : S5/S6/ Secual Hub/Secual Box 3

SKU : ES-DLA-05      EAN code : 3700930500690

## RFID WEATHERPROOF KEYPAD

### ES-D4A

Multi access control : Use both RFID and keypad to unlock.



#### Features

- Wireless frequency : Encoded 433MHz
- Transmission distance : 50m (in open area)
- Power supply Keypad : 1x CR2477 3V (included)
- Low battery notification
- Up to 60 users with secure connection
- Installation in a few minutes
- Weatherproof : IP65
- Double access control : Use both RFID and keypad to unlock
- Low power consumption : >1Year
- Compatible with Following SECUAL alarm systems : S5/S6/ Secual Hub/Secual Box 3

SKU : ES-DLA-04      EAN code : 3700649102154

## RFID | FINGERPRINT KEYPAD

### ES-D9A

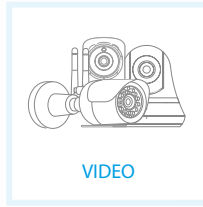
Triple access control : Use RFID, fingerprint and keypad to unlock.



#### Features

- Wireless frequency : Encoded 433MHz
- Transmission distance : 50m (in open area)
- Power supply Keypad : 3x AAA 1.5V (included)
- Low battery notification
- Up to 60 users with secure connection
- Installation in a few minutes
- Biometric fingerprint scanner
- Triple access control : Use both RFID, scanner and keypad to unlock
- Low power consumption : >1Year
- Compatible with Following SECUAL alarm systems : S5/S6/ Secual Hub/Secual Box 3

SKU : ES-DLA-03      EAN code : 3700930500669





## Wi-Fi INDOOR CAMERA

### ES-CAM2A

The ES-CAM2A is an HD IP camera with built-in microphone and infrared LEDs for night vision. Connected to your Wi-Fi network, the ES-CAM2A enables you to watch live streaming what is happening in your home on your smartphone, your tablet or your computer. The App "iSecurity+" (available for download on the App Store and Google Play) enables you to access all the features of your camera.



### Features

- Works with the app iSecurity+ under iOS or Android, or on the website iSecurityplus.com
- Image sensor: 1/3" CMOS
- Sensor resolution: 1600x1200 CMOS
- Video resolution up to 1280x720p (H.264)
- Photo resolution up to 1280x720px (JPEG)
- Focal: 3mm, Aperture: F2.0
- 8 infrared LEDs for night vision
- Vision scope: Horizontal: 90° / Vertical: 45° / Diagonal: 78°
- Shutter speed: 1/5 – 1/16000 sec.
- Refresh frequency : up to 25 pictures/sec.
- Wi-Fi: IEEE 802.11 b/g/n
- Built-in microphone, noise reduction
- Power supply: 5V 1A, 110~240V/ DC Jack
- Compatible with smartphones under iOS and Android / Tablets / PC / Mac

### Box content

- IP camera with bracket x 1
- AC adapter x 1
- Documentation

### SKU

ES-CAM2A

### EAN Code

3700649101638







## Wi-Fi INDOOR MOTORIZED CAMERA

### ES-CAM4A

The ES-CAM4A is an HD IP camera with built-in microphone and infrared LEDs for night vision. Connected to your Wi-Fi network, the ES-CAM4A enables you to watch live streaming what is happening in your home on your smartphone, your tablet or your computer. Rotate the camera from a distance with the app to create a better view. The App "iSecurity+" (available for download on the App Store and Google Play) enables you to access all the features of your camera.



### Features

- Works with the app iSecurity+ under iOS or Android, or on the website iSecurityplus.com
- Image sensor: 1/3" CMOS
- Sensor resolution: 1600x1200 CMOS
- Video resolution up to 1280x720p (H.264)
- Photo resolution up to 1280x720px (JPEG)
- Digital zoom: x2
- Rotation: horizontal (-175° / +175°), vertical (0° / 110°)
- Focal: 3.8mm, Aperture: F2.2
- 6 infrared LEDs for night vision (up to 8 m)
- Vision scope: Horizontal: 57° / Vertical: 31° / Diagonal: 66°
- Shutter speed: 1/5 – 1/16000 sec.
- Refresh frequency : up to 25 pictures/sec.
- Wi-Fi: IEEE 802.11 b/g/n
- Built-in microphone, noise reduction
- Power supply: 5V 1A, 110~240V/ DC Jack
- Compatible with smartphones under iOS and Android / Tablets / PC / Mac
- Dimensions: 107.9 x 107.9 x 116.8 mm
- Weight: 280 g

### Box content

- IP camera with bracket x 1
- AC adapter x 1
- Documentation

### SKU

ES-CAM4A

### EAN Code

3700649102321





## Wi-Fi OUTDOOR CAMERA

### ES-CAM3A

The ES-CAM3A is a weatherproof HD IP camera with infrared LEDs for night vision. Connected to your Wi-Fi network, the ES-CAM3A enables you to watch live streaming what is happening in and around your home on your smartphone, your tablet or your computer. The App "iSecurity+" (available for download on the App Store and Google Play) enables you to access all the features of your camera.

The ES-CAM3A is completely sealed from dust and protected against strong jets of water and rain.



### Features

- Works with the app iSecurity+ under iOS or Android, or on the website iSecurityplus.com
- Image sensor: 1/3" CMOS
- Sensor resolution: 1600x1200 CMOS
- Video resolution up to 1280x720p (H.264)
- Photo resolution up to 1280x720px (JPEG)
- Focal: 3.8mm, Aperture: F2.2
- 24 infrared LEDs for night vision (Up to 15m)
- Vision scope: Horizontal: 75° / Vertical: 45° / Diagonal: 100°
- Shutter speed: 1/5 – 1/16000 sec.
- Refresh frequency : up to 25 pictures/sec.
- Wi-Fi: IEEE 802.11 b/g/n
- Power supply: 5V 1A, 110~240V/ DC Jack
- Compatible with smartphones under iOS and Android / Tablets / PC / Mac
- Dimensions: 205 x 73.5 x 96 mm
- Weight: 546 g

### Box content

- IP camera with bracket x 1
- Hex key 1x
- AC adapter x 1
- Documentation

### SKU

ES-CAM3A

### EAN Code

3700649102314



## Wi-Fi INDOOR CAMERA

### ES-CAM2B

The ES-CAM2B is an HD IP camera with built-in microphone and infrared LEDs for night vision. Connected to your Wi-Fi network, the ES-CAM2B enables you to watch live streaming what is happening in your home on your smartphone, your tablet or your computer. The App (available for download on the App Store and Google Play) enables you to access all the features of your camera.



### Features

- Works with iOS and Android
- Frequency : Wi-Fi: IEEE 802.11 b/g/n
- Image sensor: 1/3" CMOS
- Sensor resolution: 1600x1200 CMOS
- Video resolution up to 1280x720p (H.264)
- Photo resolution up to 1280x720px (JPEG)
- Focal: 3mm, Aperture: F2.0
- 8 infrared LEDs for night vision
- Vision scope: Horizontal: 90° / Vertical: 45° / Diagonal: 78°
- Shutter speed: 1/5 – 1/16000 sec.
- Refresh frequency : up to 25 pictures/sec.
- Wi-Fi: IEEE 802.11 b/g/n
- Built-in microphone, noise reduction
- Power supply: 5V 1A, 110~240V/ DC Jack
- Compatible with smartphones under iOS and Android / Tablets / PC / Mac

### Box content

- IP camera with bracket x 1
- AC adapter x 1
- Documentation



## Wi-Fi VIDEO DOORBELL

### VIPER

The VIPER is an outdoor HD IP doorbell with built-in microphone and infrared LEDs for night vision. Connected to your Wi-Fi network, the VIPER doorbell enables you to watch and speak when someone rings your VIPER doorbell. The App (available for download on the App Store and Google Play) enables you to access all the features of your doorbell.



### Features

- Complete wirefree installation
- Works with iOS and Android
- Frequency : Wi-Fi: IEEE 802.11 b/g/n
- Battery operation : 2x 18650 3.7V rechargeable batteries [operation time : 8 - 12 months]
- Possibility to connect to you existing doorbell system
- Fast Wakeup speed : 600 ms
- Video resolution up to 1280x720p (H.264)
- Photo resolution up to 1280x720px (JPEG)
- 6 infrared LEDs for night vision [Max. 5m]
- Two way intercom function from Smartphone
- PIR Motion detection with video/photo storage
- Storage capacity : Max 32Gb
- Push notification within one second
- Vision scope: 160° Wide angle view
- Built-in microphone with noise reduction
- Wi-Fi 802.11 b/g/n
- Power supply: 5V 1A, 110~240V/ DC Jack
- Compatible with smartphones under iOS and Android / Tablets / PC / Mac

### Box content

- Video doorbell x 1
- AC adapter x 1
- Screws and plugs
- Documentation

### SKU

TBD

### EAN

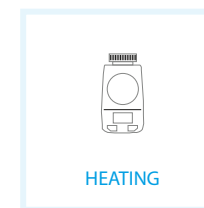
TBD













## BLUETOOTH® CONNECTED RADIATOR THERMOSTAT

### ES-SH1

Radiator thermostat for regulation of room temperature according to personal needs. Operate the radiator thermostat with your Smartphone. Also a stand-alone, simple to install and easy to use radiator thermostat.



### Features

- Can also be operated without a smartphone
- Frequency : Bluetooth 2.0
- Operating distance :
- Power : 2 x1.5V LR6 battery (life up to 2 years)
- Smart regulate the temperature according to the needs
- Intuitive operation via free iOS and Android app at any time without smartphone use boost function for quick, short-term heating
- Compact device with a particularly quiet operation
- Configuration of the week programs input arbitrary load with up to 7 times per day
- Auto check open windows function to save power
- Fits to valves of most common manufacturers
- Easy to mount without having to drain any water or intervene in the heating system; no special tools required for any type of radiator

### Box content

- Thermostatic valve x 1
- Documentation

### SKU

ES-SH1

### EAN Code





Pachtgoedstraat 2  
9140 Temse  
Belgium  
service@etiger.com  
t. 0032(0)3 780 67 30

[www.etiger.com](http://www.etiger.com)