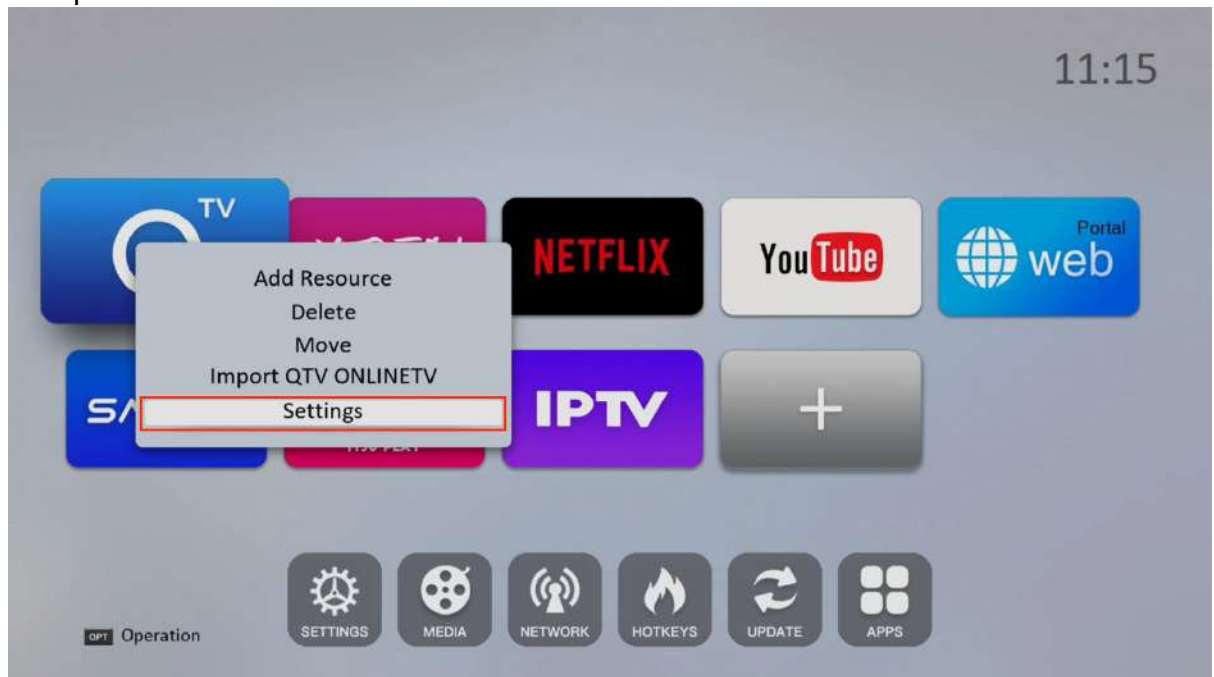
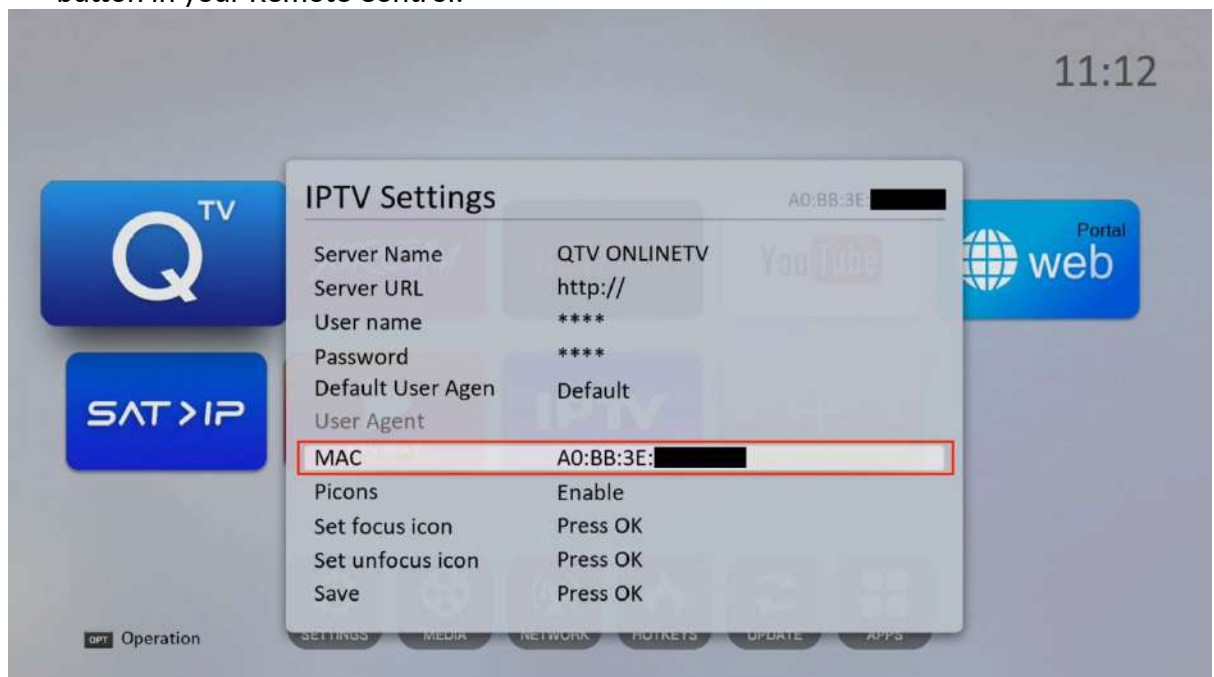


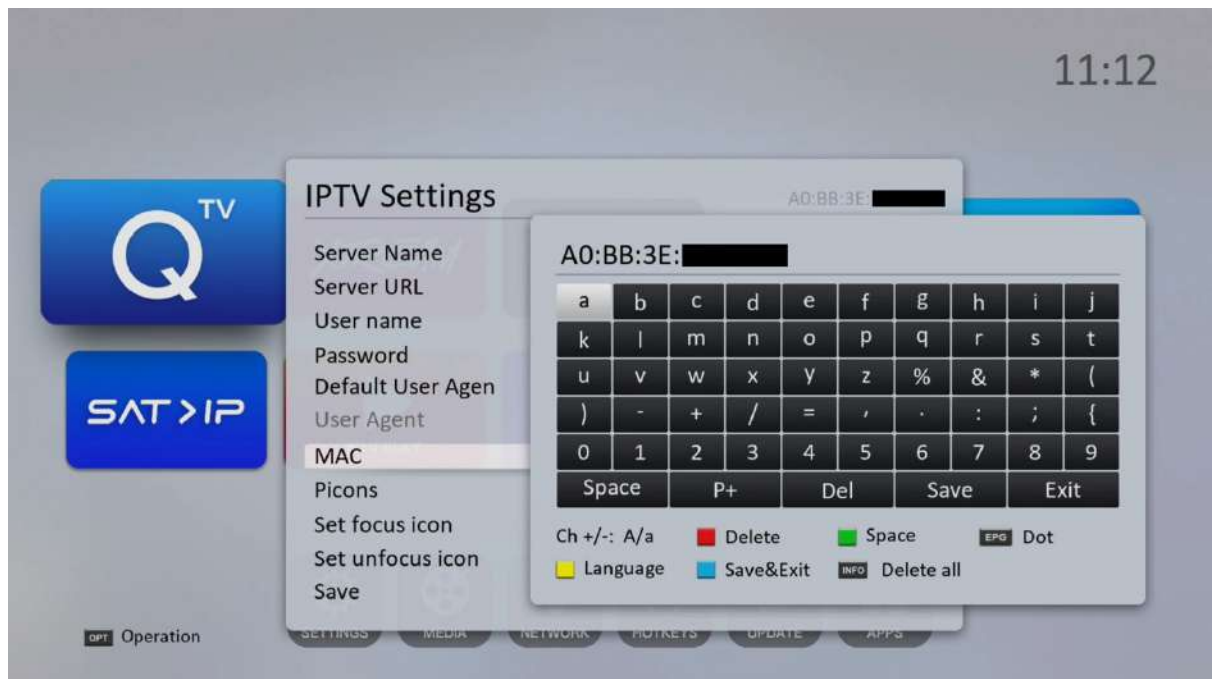
1. In the Main Menu, go over the “QTV” app and press the “Option” button in your Remote Control and will pop up this window and you should select the “Settings” option:



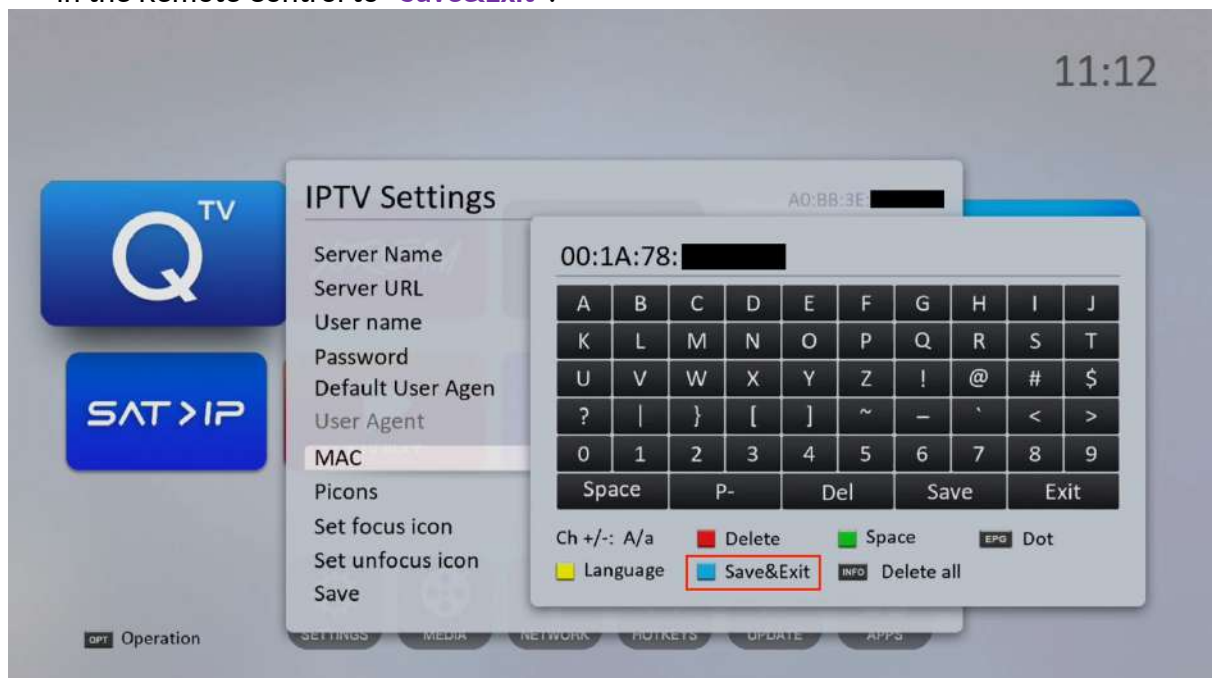
2. It will pop up this window, you should go to the “MAC” option and press the “OK” button in your Remote Control:



3. It will pop up this keyboard where you will be able to edit and change the current "MAC":



4. Once you have your new number for the "MAC", you should press the "Blue" button in the Remote Control to "Save&Exit":



5. You will back to this window, then you need to go on the “**Save**” and press the “**OK**” button of your Remote Control, and then the new “**MAC**” should be already saved and ready:

